

# CANAVIA

AVIATION ACADEMY



**EASA**

***Integrated ATPL (A)***





A UNIQUE PILOT SCHOOL

# CANAVIA

is a professional pilot school founded in 2009 in the Canary Islands. We are proud to be the first Spanish aviation school to receive accreditation from the State Aviation Safety Agency (AESA) as an approved educational organization according to EASA standards in 2013, making us E-ATO-172.

CANAVIA is the only aviation school in the Canary Islands that offers aviation courses at all levels - from zero experience to the highest degree of pilot education.

In the past 14 years, our school has qualified hundreds of students who are now employed by major worldwide airlines, or have developed their professional activity in executive business flying or other commercial aviation sectors, as a result of having received excellent training.



**+10**  
*aircraft*

**+20**  
*instructors*

**+7.000**  
*hours per  
year*

**+36.000**  
*flight hours*

**+700**  
*students*

**3 bases**  
*Tenerife &  
Gran Canaria*

**CAO**  
*Maintenance  
Centre*



Fulfill your dream of becoming a professional pilot with the most complete Airline Pilot Course on the market and obtain all the licences in record time - only 15 months!

No previous experience is required to start the training. You just need intermediate English, Maths and Physics levels, and to be at least 17 years old.

If you already have experience, our unique training methodology will help you expand your knowledge and skills, preparing you to embark on a career as a professional airline pilot.

You will obtain an EASA ATPL FROZEN licence, which will allow you to work as pilot-in-command (PIC) in commercial airplanes or co-pilot in any airline.





### **//// EASA ATPL LICENCE PRIVILEGES**

This licence entitles you to perform aerial and general aviation work; act as pilot-in-command in commercial air transport operations in any aircraft certified for a single-pilot and also act as co-pilot in airlines.

### **//// TRAINING COMPLETION IN ONLY 15 MONTHS**

Integrated ATPL is a wisely-constructed full-time program with a fixed training schedule that allows finishing the entire program in only 15 months. You can easily estimate training completion date and plan your job interviews in advance, as well as reduce training costs by living in the Canary Islands.

### **//// WHO IS THIS PROGRAM FOR?**

EASA ATPL Integrated program is suitable for anyone who wants to become a professional pilot fast and from the zero level. This program is ideal for anyone who wants to quickly complete their studies and start working in professional aviation without unnecessary delays, while receiving the most comprehensive training.







## ENTRY REQUIREMENTS FOR ALL APPLICANTS

- Class 1 Aeronautical Medical certificate
- 
- At least 18 years old at the time of obtaining the licence
- 
- A bachelor's degree is recommended
- 
- Basic-level Maths & Physics test
- 
- Intermediate level English
- 
- Enthusiasm & commitment



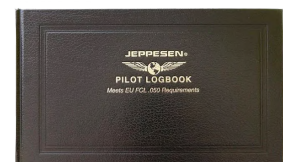
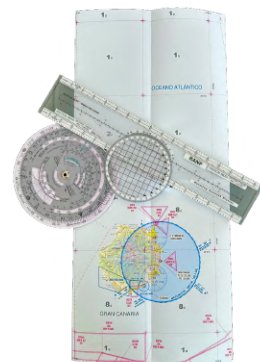
# Training

- 227 flight training hours
- 
- 800 hours of on-site theoretical lessons
- 
- ATPL theoretical exams (1st attempt)
- 
- Flight Skill Tests (1st attempt)
- 
- Flight examiner fee (1st attempt)
- 
- English Language Proficiency Test
- 
- UPRT Course
- 
- Multi Crew Cooperation Training
- 
- Studying Techniques Course
- 
- Airline Recruitment Process Coaching
- 
- Training Expenses Loss Insurance\*

# Material

- Pad Pilot study materials
- 
- Headset
- 
- CR3 Computer
- 
- Plotter
- 
- Logbook
- 
- Navigation charts
- 
- Online library
- 
- Suitcase
- 
- Uniform

\*You will be able to recover the amount paid to the school in case you lose - during your training period - the ability to renew your Class 1 medical examination.





Canavia's theoretical program is composed of 800 hours of on-site learning taught at our facilities and with the support of different study platforms which will provide multimedia material with key elements such as Knowledge, Skills and Attitudes (KSA), Threat and Error Management (TEM) and Crew Resource Management (CRM), which are key for the professional development of students.

## //// SUBJECTS

- Air Law
- Aircraft General Knowledge
- Instrumentation
- Mass & Balance
- Performance
- Flight Planning and Monitoring
- Human Performance and Limitations
- Meteorology
- General Navigation
- Radio Navigation
- Operational Procedures
- Principles of Flight
- Communications
- Knowledge, Skills and Attitudes (KSA)





Training	Flight hours	Week	Theory
----------	--------------	------	--------

First flight experience

1



0

- Start of the theoretical ATPL course (240 learning hours and theoretical assessment before flights)
- SEP and Flight Safety Course
- General Navigation completed

**PHASE 1**

- Basic VFR
- Progress check before first solo flight

17,5



12

**PHASE 2**

- Advanced VFR, (Release), Basic UPRT, Cross-country
- Progress check before first cross- country solo
- Cross-country solo
- Private Pilot progress check

45



24

- 7 official ATPL exams passed

**PHASE 3**

- SEP cross-country flight training
- Cross-country flight check (Phase 1, 2 & 3)
- VFR Cross-country 300 NM
- Basic IR flight
- Basic IR UPRT
- Basic IR internal check

69,5



40

- Theoretical course completed
- Theory release (internal)
- 13 official ATPL examinations passed

**PHASES 4 & 5**

- Night VFR
- Advanced IR flight
- SPIC cross-country training
- PBN
- Advanced UPRT & assesment MEP, VFR flight
- MEP, IFR cross-country
- CPL (A) skill test
- IR (A) MEP skill test

167

170

176

182

184

185,5



48

- Night VFR course
- ICAO English exam (level 4-6)

**PHASE 6**

MCC course

205,5



50

- MCC theoretical course



53

- **CPL (A) obtained**





*Tecnam P2008JC*



*Tecnam P2006T*



*Cessna 150M*



*Pipistrel Virus SW121A*

We also have EASA certified A320, B737 and FNPT-II simulators which provide realistic flight performance, high-definition visuals and a real cockpit so that student pilots can train under conditions and in situations as similar as possible to those of a real flight.





## **OBTAINED QUALIFICATIONS**

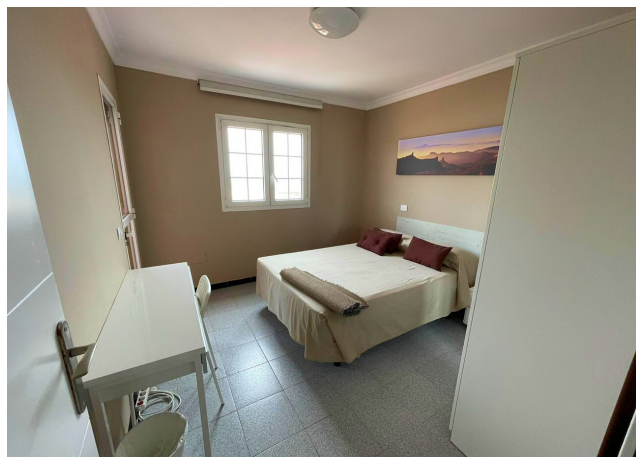
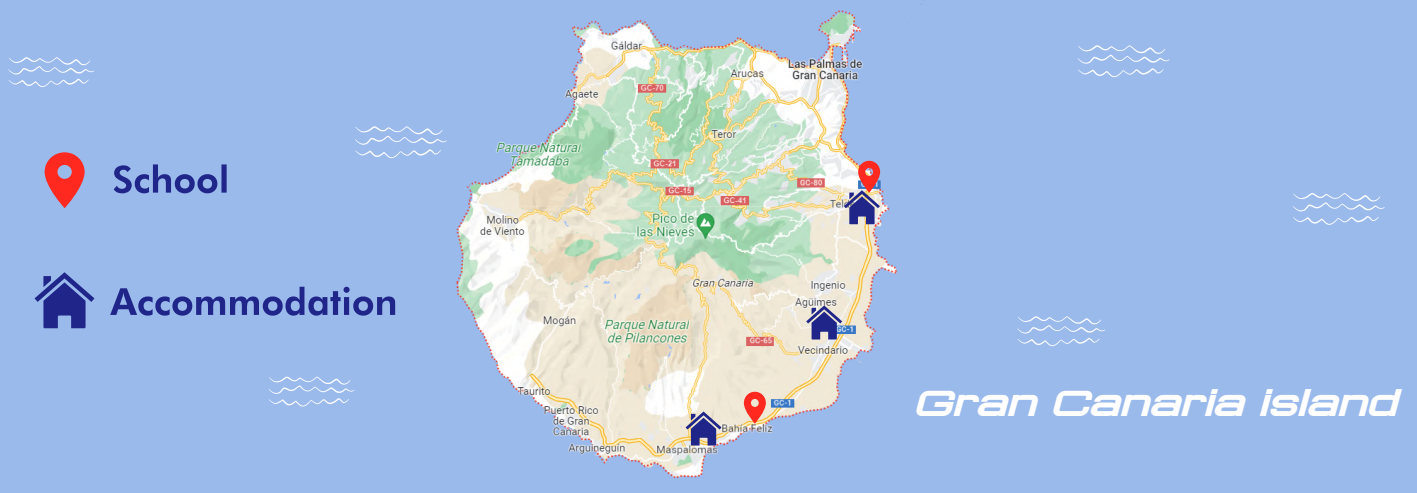
- Commercial Pilot Licence (CPL)
- 
- Instrument Rating (IR + PBN)
- 
- Single-Engine Piston Rating (SEP)
- 
- Multi-Engine Piston Rating (MEP)
- 
- International Radiotelephone Operator Rating
- 
- Airline Transport Pilot Licence Theoretical Knowledge (ATPL-f)
- 
- Multi Crew Cooperation Certificate (MCC)
- 
- Upset Prevention and Recovery Training Certificate (UPRT-A)
- 
- English Language Proficiency (ICAO Level 4/5/6)





## ACCOMMODATION

Canavia offers accommodation options at cozy student houses, located within a maximum of a 30 minute drive to reach classes and flights.





*Why choose us*

# *Top Reasons To Choose Canavia*

## **//// CLIMATE OF THE CANARY ISLANDS**

The climate is subtropical and generally mild throughout the year, with temperatures ranging from 18-24°C in winter and 24-28°C in summer, creating perfect conditions for pilot training. We fly 365 days per year!

## **//// KEY LOCATIONS**

We are proud to run 3 operational bases and our own CAO Maintenance centre in the Canary Islands. With 8 international airports within 2 hours distance from any base, we created perfect conditions for students to gain all the necessary knowledge and skills during their training.

## **//// ACCOMMODATION**

Accommodation is available for the entire training period - shared residences with single rooms for the exclusive use of our students.





## **////// INTERNATIONAL CAMPUS**

We are part of the first and only Aviation Campus in the Canary Islands - a place to meet aviation professionals and students of all nationalities. You have the opportunity to quickly integrate into a rich international aeronautical environment.

**aviation  
campus**

## **////// ON-SITE MAINTENANCE**

Canavia is an EASA certified maintenance centre, ES.CAO.026, reinforcing our structure as a training centre and guaranteeing the highest standards of availability, safety and quality of our fleet.

## **////// PRIVATE AIRFIELD**

In addition to running several operational bases at main airports, we have a private airfield managed exclusively by our school, which means qualified flight training without any delays or interferences.

## **////// BRAND NEW FLEET**

We operate a versatile fleet of more than 10 aircraft with the latest Garmin Glass Cockpit navigation systems. In addition, we have Airbus A320 and Boeing B737 simulators, 1 FNPT-II certified simulator and 4 training devices.





**//// EASA Integrated ATPL Standard**



Our Standard ATPL Integrated program will take you from complete beginner to fully qualified commercial pilot in only 15 months.

Includes 227 flight hours and MCC Multi Crew Cooperation training.

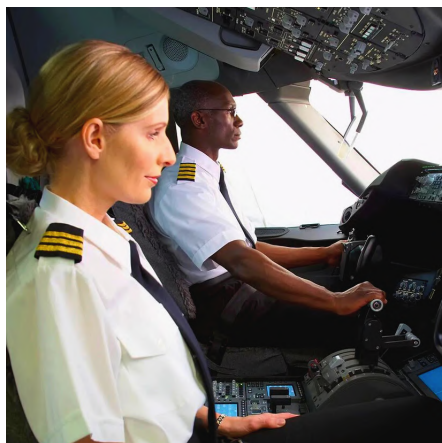
**//// EASA Integrated ATPL Advanced**



Includes all standard training plus Airline Pilot Standard (APS) MCC training, adding 20 flight hours in a jet aircraft simulator.

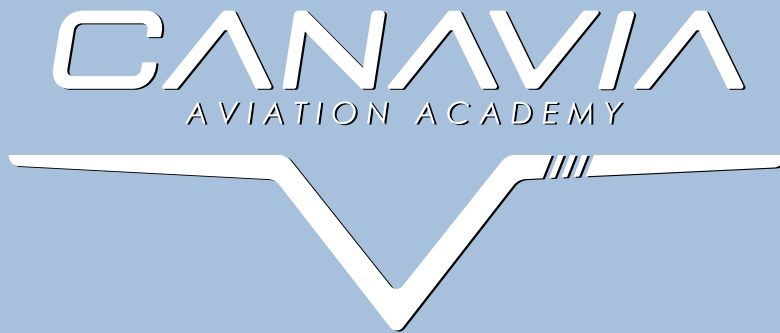
Some airlines have implemented this requirement in their recruitment policies.

**//// EASA Integrated ATPL First Officer**



The most complete training program available for an airline pilot. Geared towards airline admission, it includes 280 flight hours, APS MCC training and a Type Rating\* course.

\*Airbus A320 | Boeing B737 | ATR 72 | Embraer 190



*If you want to fly, we give you wings  
If you want to fly, we give you wings*



☎ 928 939 369  
☎ 659 100 726  
✉ info@canavia.es

**aviation  
campus**

[www.flycanavia.com](http://www.flycanavia.com)

